



Everyone Owns Integrity

Integrity Data Hub (IDH) Request for Information (RFI) Webinar Presentation

August 19, 2016

naswa.org/integrity

AGENDA



- To provide background information
 - UI Integrity Center (the Center)
 - Integrity Data Hub (IDH) goal
- To review the IDH Request for Information (RFI)
 - Purpose
 - IDH vision
 - Key functional areas
 - Response requirements
 - Solicit feedback/questions

WEBINAR ADMINISTRATION/GROUND RULES



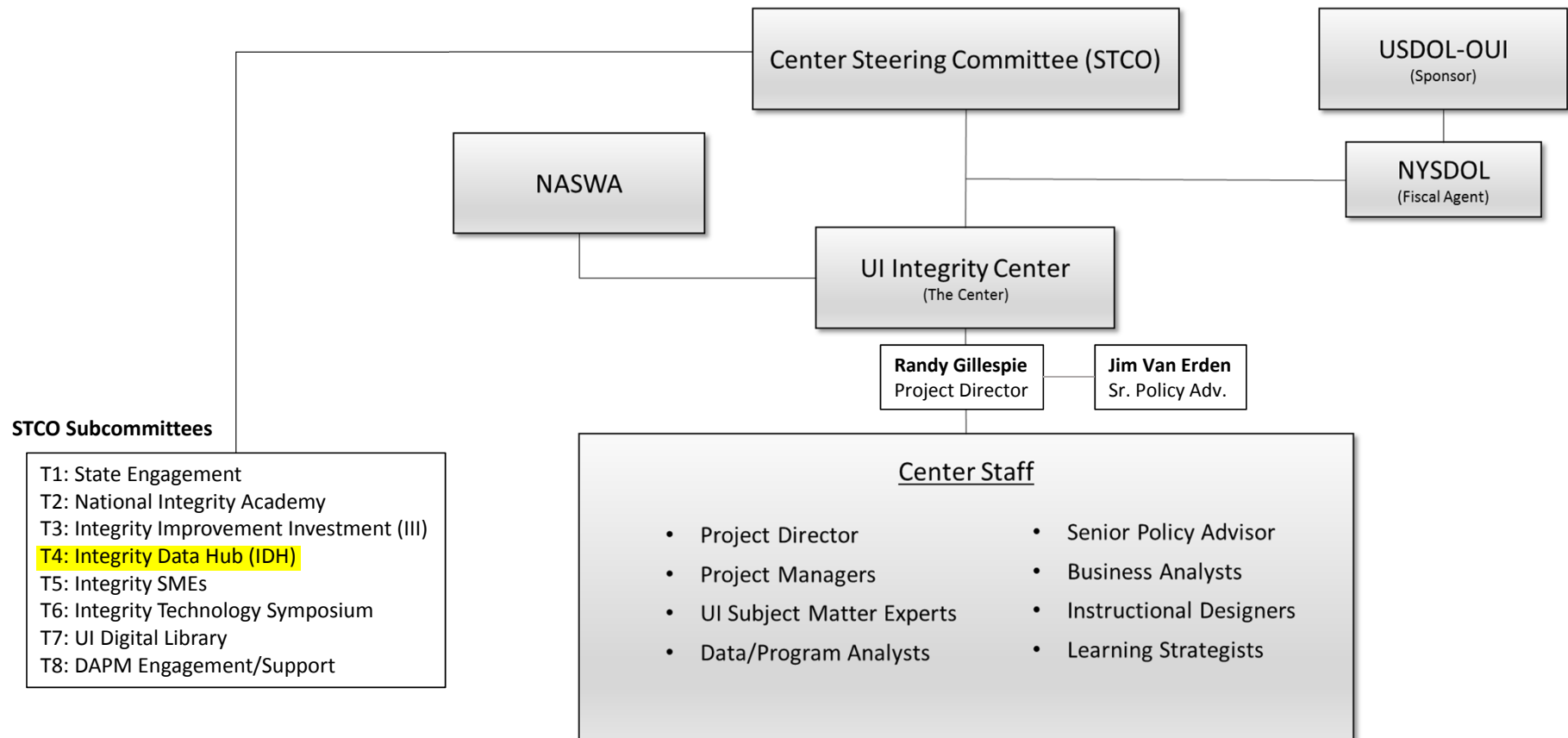
- Webinar will be conducted in “listen-only” mode
- Session will be recorded and posted
- Questions should be submitted electronically to DataHubRFI@itsc.org
- All questions and responses will be posted on the RFI webpage at: <http://www.itsc.org/pages/DataHubRFI.aspx>

UI INTEGRITY CENTER (FORMERLY UI CENTER OF EXCELLENCE)



- In 2012, USDOL selected New York State Dept. of Labor (NYSDOL) to lead the development of the UI Integrity Center
- NYSDOL subsequently passed leadership responsibilities for the Center to NASWA/CESER
- The Center is charged with developing:
 - “innovative UI program strategies to reduce improper payments, prevent and detect fraud and recover any improper payments made” (UIPL 28-12).*
- Additional information about the Center
 - <http://naswa.org/integrity/>

UI CENTER PARTNERSHIP





BACKGROUND

- States need improved access to data for integrity cross-matching
- There are a number of data sources that, if accessed, would support State's efforts to combat improper payments and fraud
- Many State IT departments needed to support such integrity-related efforts are under-resourced
 - Can affect or compete with UI modernization efforts

IDH GOAL



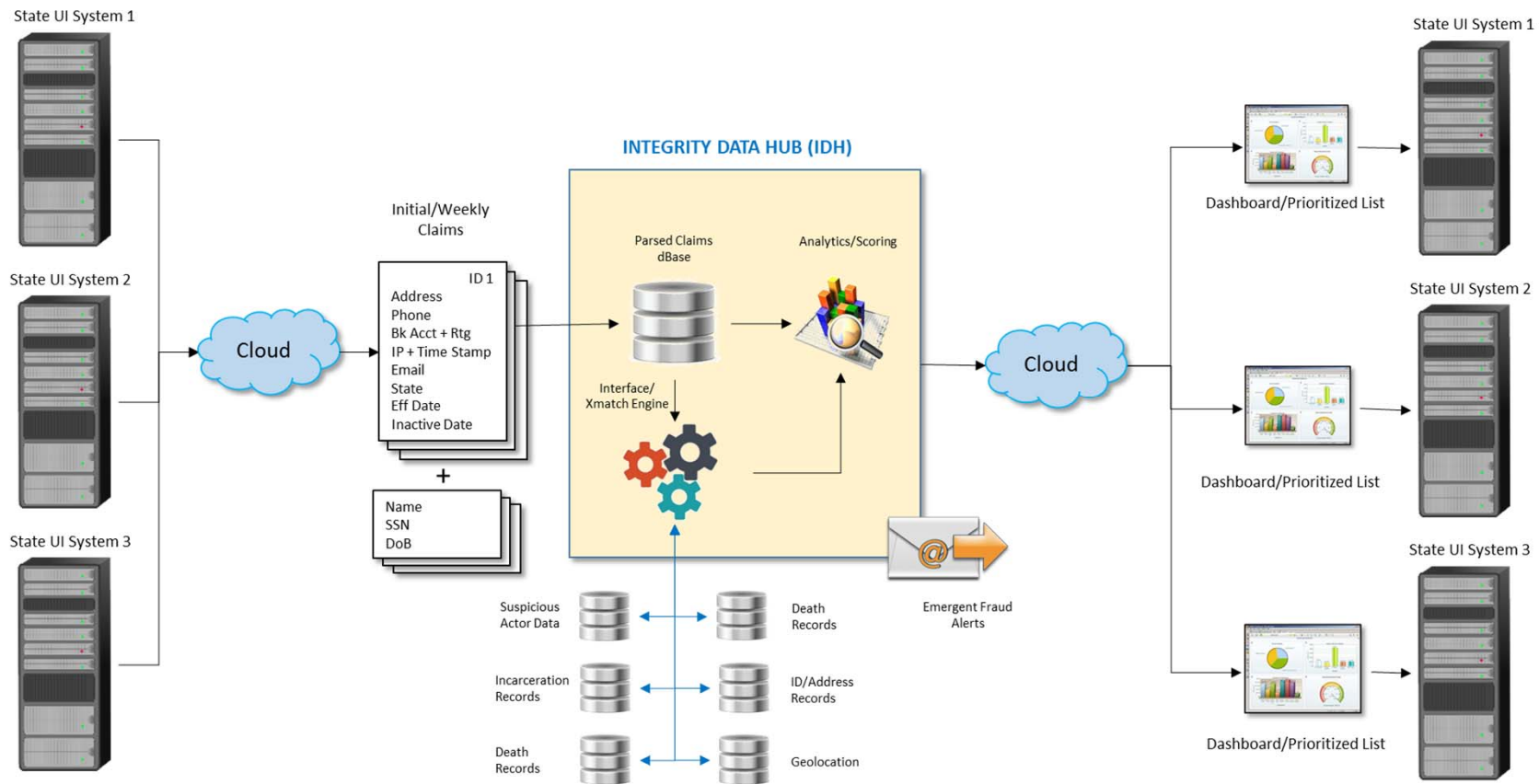
- Design and build a single hub with interfaces to multiple databases for purposes of cross-matching and data retrieval
 - Eliminate the duplication of effort of multiple states
 - Provide states ease of access to a variety of data sources
 - Incorporate data analytics and predictive modeling solutions



IDH RFI PURPOSE

- To engage the vendor community and obtain information on availability of technology/solutions with potential applicability to the IDH vision
 - Data sources
 - Data exchange/cross-matching solutions
 - Data analysis/analytics solutions

INTEGRITY DATA HUB VISION





IDH KEY FUNCTIONAL AREAS

- Parsed Claims Database
 - Specific elements from State initial and continued claims
- Data Sources
 - May include government/public data and/or private data sources
- Interface/Cross-Match Engine
 - Supports interface with multiple data sources
- Data Analytics/Scoring
 - Analyzes claims data, including cross-match results from data sources
- Output
 - Provides dashboard/prioritized output in easy to consume format for States

RFI TIMELINE



Activity	Timeline
RFI Published	August 12, 2016
RFI Webinar	August 19, 2016
Final Clarification Questions	August 26, 2016
Questions and Responses Posted	September 2, 2016
RFI Responses Due	September 9, 2016

No Later Than

Questions and responses will be posted ASAP



RFI RESPONSE REQUIREMENTS

- Company Overview – 1 page
 - Brief description of the company, products/services, size and Point of Contact (PoC) for communication
- Product Overview – 2 pages (per product)
 - Overview of the company's products with potential application to the IDH vision
- Project Summary Citations – Up to 3 citations – 3 pages total
 - Summary information on how the product has been used
 - Include: summary, size/scope, initial/final budget, agency, agency PoC



RFI RESPONSE REQUIREMENTS

- Application to the IDH Vision – 5 pages per product
 - What functional areas are addressed?
 - What data inputs/fields are needed?
 - Relationships or unique capabilities
 - Describe implementation in a cloud-based, multi-state environment
- Rough Order Magnitude (ROM) Pricing – 1 page per product
 - Development/Tailoring
 - Implementation
 - Licensing
 - Transaction costs
 - Addition/Integration of data sources
 - Recurring fees (ex. licensing, access)
 - Ongoing maintenance/support
 - Other

RFI RESPONSE REQUIREMENTS



- Other Considerations – 2 pages
 - Topics
 - Solutions
 - Issues



RFI ADMINISTRATIVE ITEMS AND GUIDANCE

- Confidentiality
 - Mark all confidential information as such
- Format
 - MS Word 2003 or Adobe Acrobat
 - 8.5" x 11", 12-point font, ½ inch margins, page numbers
- Questions
 - Submit to: DataHubRFI@itsc.org
 - Please put "RFI QUESTION" in the subject line
- RFI Responses
 - Submit to: DataHubRFI@itsc.org
 - Due: 5:00 p.m. EDT September 9, 2016

RFI ADMINISTRATIVE ITEMS AND GUIDANCE



- RFI Information

- <http://www.itsc.org/pages/DataHubRFI.aspx>
- Webinar recording
- Webinar presentation
- Questions and responses
- Updates (as needed)

Request for Information: UI Integrity Data Hub (IDH)

The UI Integrity Center (Center) has published this RFI to engage the vendor community and obtain information on existing data sources and COTS-based technology that might support the data exchange, data analysis and data analytics capabilities of the IDH. We also want to obtain information on estimated costs to implement these technologies, the extensibility and cost of adding additional users, and on recurring maintenance and support costs.

RFI Integrity Data Hub (IDH) (PDF)

Request for Information: Integrity Data Hub (IDH) (Webinar)
August 19, 2016
11:00 am – 12:30 pm EDT

[Click here](#) to request information via email or
[Join](#) (PC, Mac, Linux, iOS or Android)
Meeting ID: 779 418 809
Telephone:
+1 605 538 9966 (US Toll) (preferred)
+1 405 538 0958 (US Toll)

- **Recording** - Coming soon
- **Presentation** - Coming soon
- **Questions** - Coming soon

The purpose of the Webinar is to provide information on the Center, review the RFI, provide information on envisioned IDH functionality, and to document and respond to questions.

Important Dates:

Project Activity	Timeline
RFI Publication Date:	August 12, 2016
RFI Webinar:	August 19, 2016
Final Clarification Questions:	August 26, 2016
Questions and Responses Posted:	September 2, 2016
RFI Responses Due:	September 9, 2016 by 5:00 p.m. EDT to DataHubRFI@itsc.org